

Wifi Setting Instruction

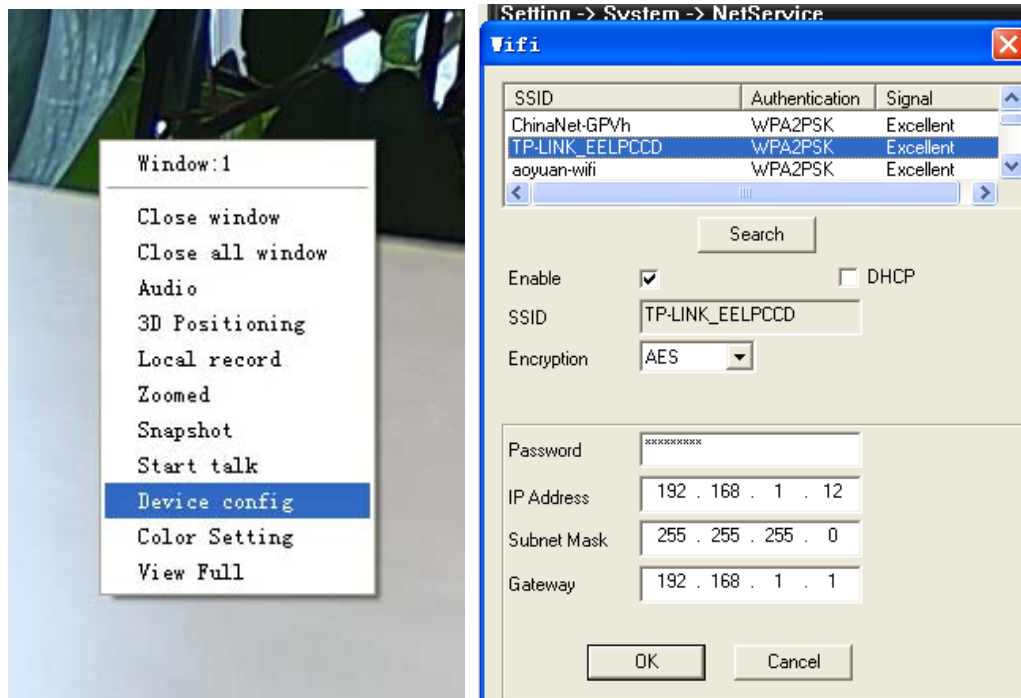
Connect IP camera into wireless router through wifi module. Access to the ip camera by IP address. To use this function, the precondition is IP cameras is with wifi module already.

Go to the menu orderly. right click and go to interface like pic1 shows

Device config->System->NetService->wifi (CMS client) .DeviceCfg> System->NetService->wifi (IE client) .

Enable wifi—>Search—>choose corresponding wifi device —>input password—>ok—>ok—>confirm.

(Remarks: You need to connect the ip camera to the router by network cable for first time setting. After the password save successfully, you can disconnect the network cable)



Picture(1)

Picture(2)

【Search】 : click **【Search】** , to search available wireless device in current scope

【Enable】 : After choose enable, you can start to set

【SSID】 : wireless LAN name, automatically match the wireless network you connected

【Password】 : network password for wireless router

【IPAddress】 : Set device's IP address, default is 192.168.1.12

【Subnet Mask】 : set device's subnet mask, default is 255.255.255.0

【Gateway】: set device's gateway, default is 192.168.1.1